

Data Execution Protection (DEP) Prevents Running SAFIRE



Data Execution Protection can prevent SAFIRE from running, or cause problems with running supporting applications. This is especially true for Windows Vista or Windows Server, where DEP is enabled for all programs by default.

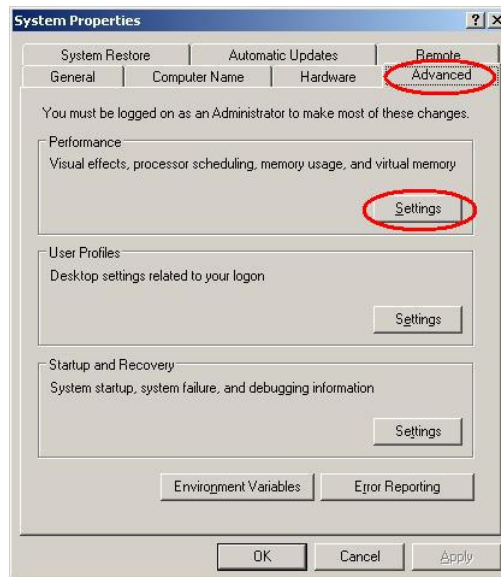
SAFIRE Organizer, License Wizard, etc will appear to crash without any message; the application just disappears; all windows close.

The solution is to disable DEP on the executable applications in the SAFIRE installation directory. Typically this is C:\SAFIRE\SAFIRE_EXE_20051501\bin. (the version digits of SAFIRE_EXE_XXXXXXX will be different, based on which version or versions of SAFIRE are installed.)

To disable DEP on these executables:

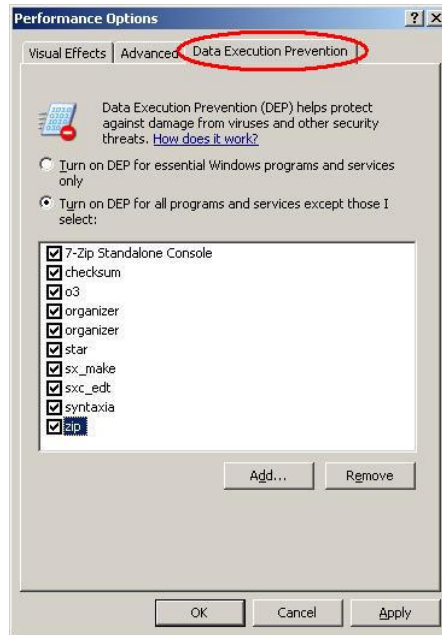
Open the System Properties dialog; either by *Control Panel* → *System* or right-click on the *My Computer* icon on the desktop and select *Properties*.

Select the *Advanced* tab, then select *Settings* in the *Performance* section.



This brings up the Performance Options dialog. Select the *Data Execution Prevention* tab.

Data Execution Protection (DEP) Prevents Running SAFIRE



Turn on DEP for all programs and services except those I select will be selected; SAFIRE runs without problems if *Turn on DEP for essential Windows programs and services only* is selected.

You can either change the selection to *essential Windows programs and services only* or add the SAFIRE executables to the exception list.

To add the SAFIRE executables to the exception list, select *Add...* and browse to the `bin` directory for the version of SAFIRE installed. Typically this is in `C:\SAFIRE`.

Add each executable individually.

Finally, select *Apply* then *OK*.

SAFIRE will now operate properly.

Written 23 June 2009 by ajw
This Technical Note applies to:

- All products running SAFIRE

Support questions or issues should be emailed to support@valid8.com
or create a support ticket at <http://support.valid8.com/open.php>